

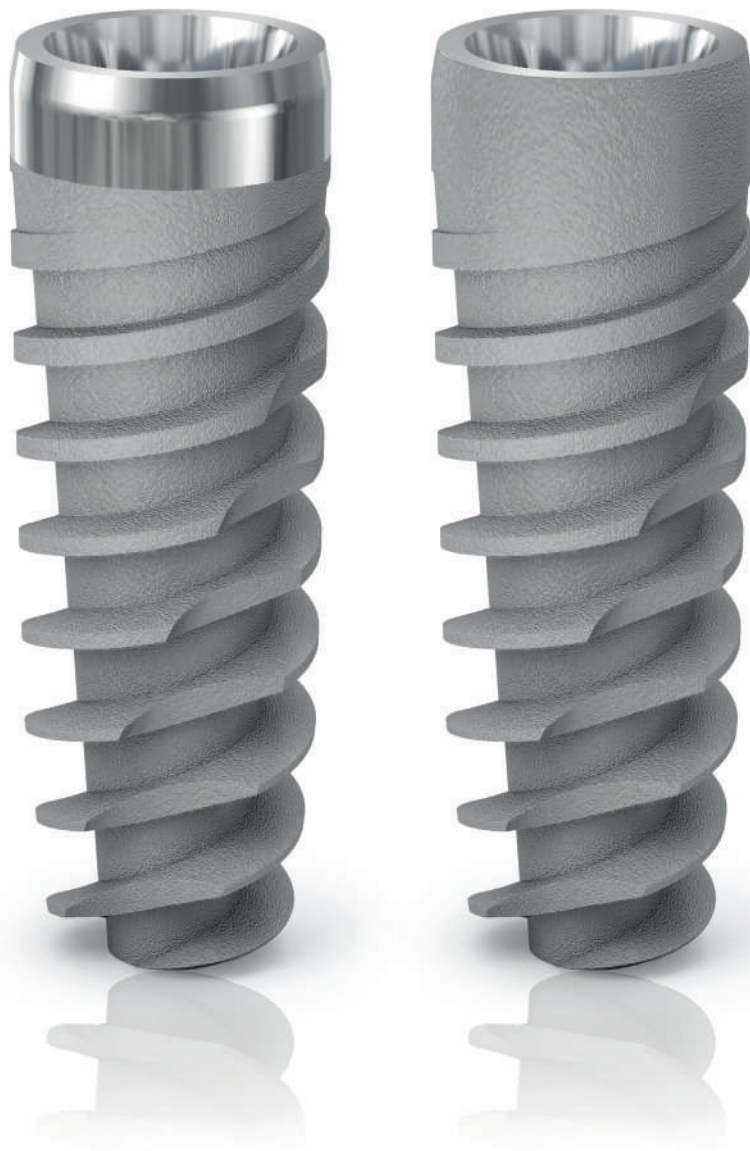


JDENTAL CARE

just smile



MADE IN ITALY



Dental Implant

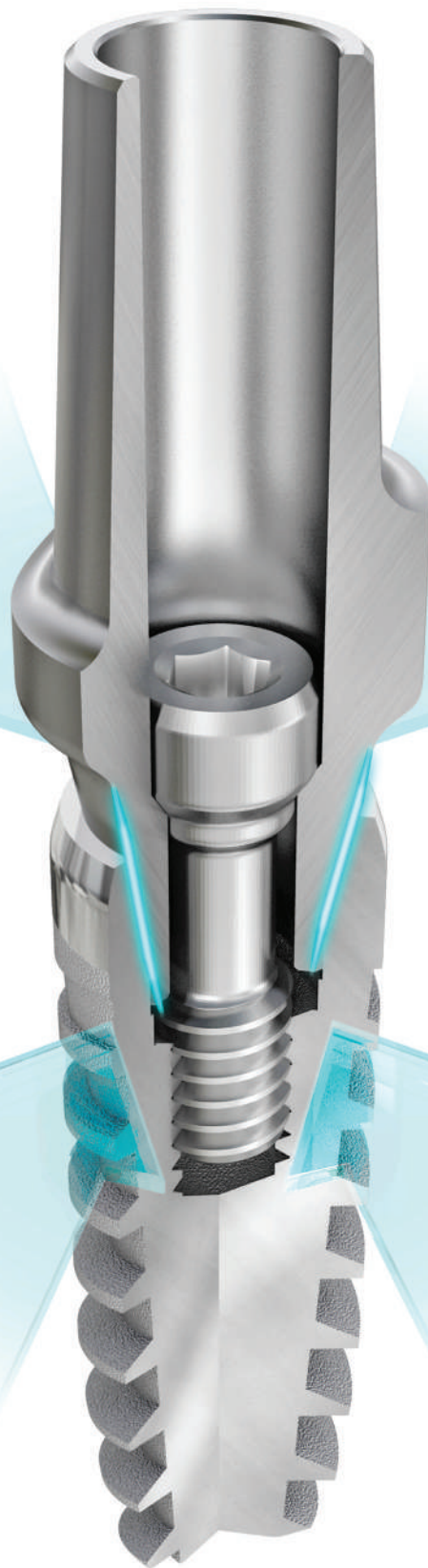
JDICON[®]

Conical Connection

THE CONICAL CONNECTION.

This unique connection offers:

- Tight seal and high mechanical strength
- High level of mechanical stability under all clinical loading conditions
- Better force transition from the implant body to the prosthetic abutment
- Lower stress condition of the prosthetic screw



The conical connection is significantly **superior in term of bacterial seal** as compared to other connection systems and it is more resistant to abutment movement and microgap enlargement under loading. The internal conical connection also allows for platform shifting, allowing room for maximum soft tissue volume to safely come up onto the edge of the implant platform. This results in more **natural looking gums**

and also supports **less radiographically detectable crestal bone loss.**

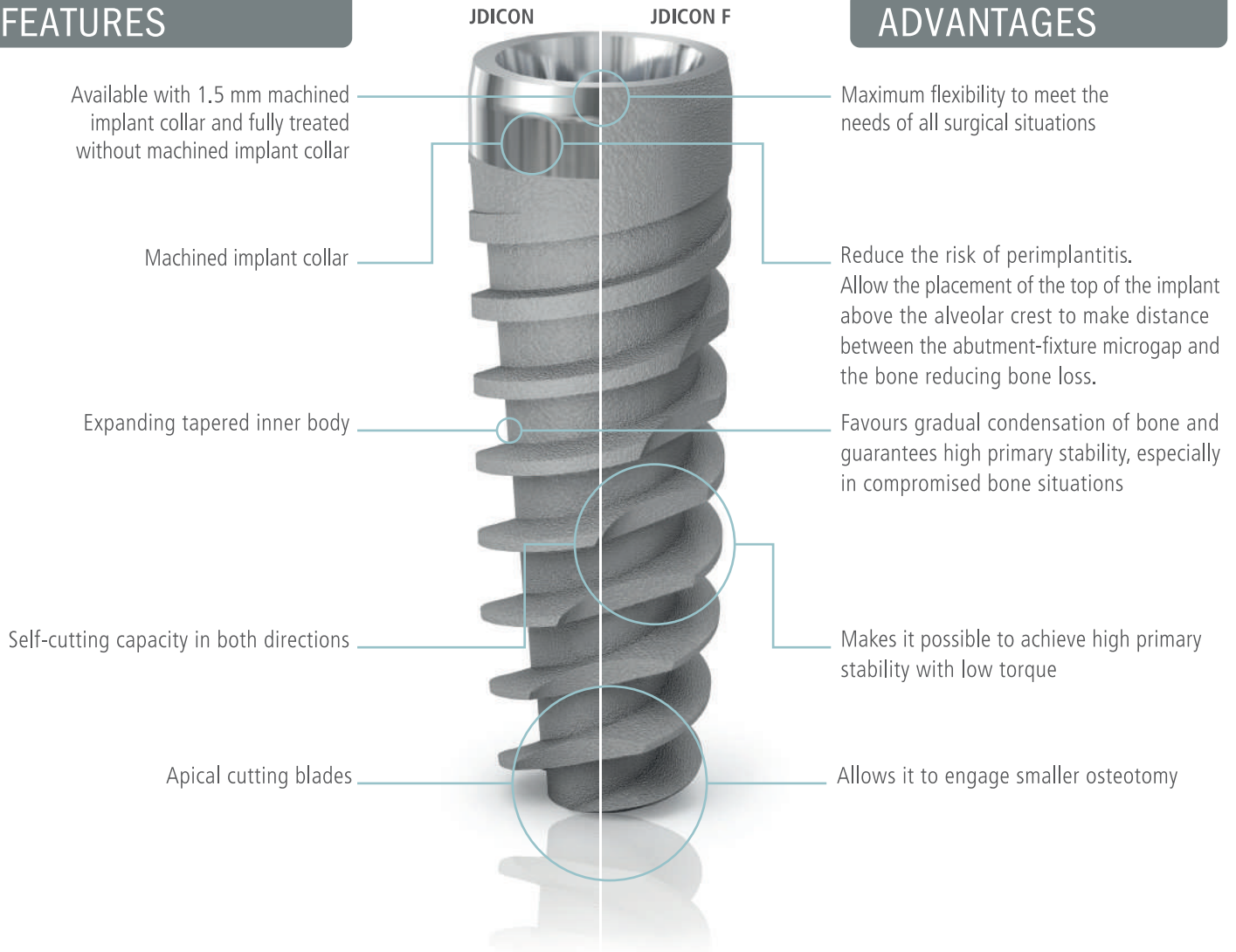
Whereas with other connections, platform shifting is achieved through the use of a smaller diameter abutment on a larger diameter implant collar, the internal conical connection has the shift built-in.

The hexagonal interlocking provides a choice of six different abutment positions providing **high restorative flexibility.**

THE UNIQUE FEATURES OF AN ICON.

FEATURES

ADVANTAGES

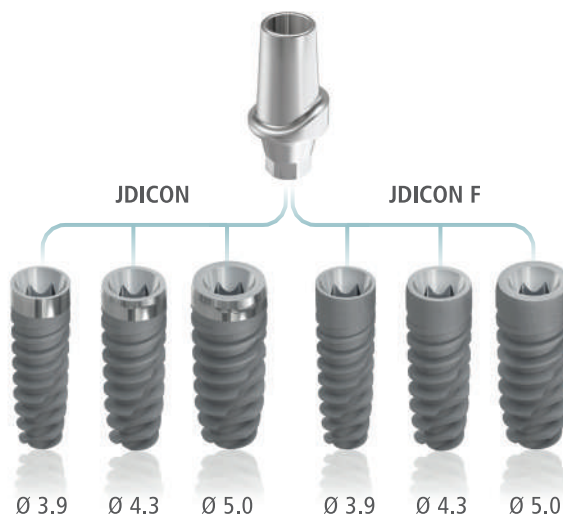


SINGLE PROSTHETIC CONNECTION.

FEATURES

ADVANTAGES

- Single prosthetic connection for all diameters, Ø 3.9, Ø 4.3, Ø 5.0.
- Dual system conical connection with internal hexagon.
- Built-in platform switching.
- Complete choice of temporary and final abutments with healing abutments of various heights and emergence profiles.

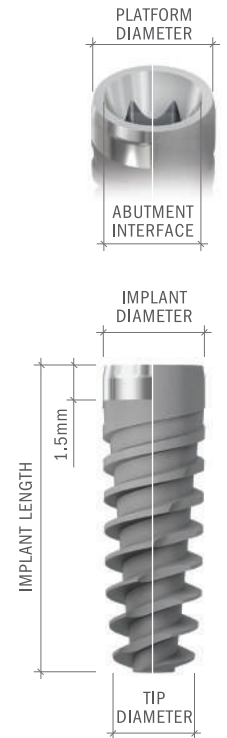


- Simplicity of clinical process.
- Reduced inventory and enhanced working flexibility.
- Excellent connection stability.
- Sealed connection, virtually eliminating implant-abutment microgap due to the specific connection design.
- Superior mechanical strength.
- Greater hard and soft tissue stability.

PRODUCT SPECIFICATIONS.

The JD ICON® dental implant is available in the diameters and lengths shown in this chart:

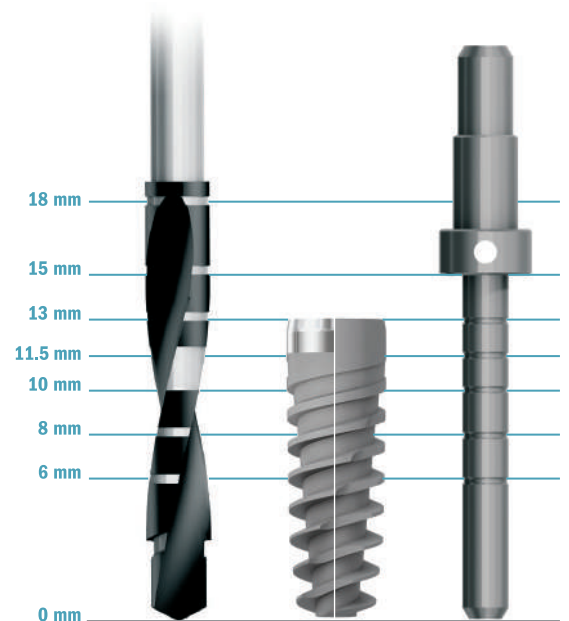
| IMPLANT DIAMETER | TIP DIAMETER | ABUTMENT INTERFACE | PLATFORM DIAMETER | LENGTH | | | | | |
|------------------|--------------|--------------------|-------------------|--------|----|------|------|----|----|
| Ø 3,9 | 2.9 | 3.4 | 3.9 | 8 | 10 | 11.5 | 13 | 15 | |
| Ø 4,3 | 3.2 | 3.4 | 4.0 | 6 | 8 | 10 | 11,5 | 13 | 15 |
| Ø 5 | 3.6 | 3.4 | 4.7 | 6 | 8 | 10 | 11,5 | 13 | 15 |



JD ICON® DRILLING PROTOCOLS.

It is recommended to adhere to the indications of the following drilling sequence to ensure optimal primary stability of the implant.

| IMPLANT DIAMETER | SOFT BONE TYPE IV | MEDIUM BONE TYPE II-III | DENSE BONE TYPE I |
|------------------|--------------------------|--|---|
| Ø 3,9 | 2.0 2.4 (2.8) | 2.0 2.4 2.8 (3.2) | 2.0 2.4 2.8 3.2 (3.6) |
| Ø 4,3 | 2.0 2.4 2.8 | 2.0 2.4 2.8 3.2 (3.6) | 2.0 2.4 2.8 3.2 3.6 (4.0) |
| Ø 5 | 2.0 2.4 2.8 3.2 | 2.0 2.4 2.8 3.2 3.6 (4.0) | 2.0 2.4 2.8 3.2 3.6 4.0 (4.4) |



Note: All dimensions are expressed in millimetres.

PRODUCT CATALOGUE

JDIcon with 1.5mm machined implant collar:

Ø 3,9

| | |
|---------|--------------------|
| IC39080 | JDIcon® Ø3.9 L8 |
| IC39100 | JDIcon® Ø3.9 L10 |
| IC39115 | JDIcon® Ø3.9 L11.5 |
| IC39130 | JDIcon® Ø3.9 L13 |
| IC39150 | JDIcon® Ø3.9 L15 |

Ø 4,3

| | |
|---------|--------------------|
| IC43060 | JDIcon® Ø4.3 L6 |
| IC43080 | JDIcon® Ø4.3 L8 |
| IC43100 | JDIcon® Ø4.3 L10 |
| IC43115 | JDIcon® Ø4.3 L11.5 |
| IC43130 | JDIcon® Ø4.3 L13 |
| IC43150 | JDIcon® Ø4.3 L15 |

Ø 5,0

| | |
|---------|--------------------|
| IC50060 | JDIcon® Ø5.0 L6 |
| IC50080 | JDIcon® Ø5.0 L8 |
| IC50100 | JDIcon® Ø5.0 L10 |
| IC50115 | JDIcon® Ø5.0 L11.5 |
| IC50130 | JDIcon® Ø5.0 L13 |
| IC50150 | JDIcon® Ø5.0 L15 |



JDIcon F fully treated:

Ø 3,9

| | |
|----------|----------------------|
| IC39080: | JDIcon® F Ø3.9 L8 |
| IC39100: | JDIcon® F Ø3.9 L10 |
| IC39115: | JDIcon® F Ø3.9 L11.5 |
| IC39130: | JDIcon® F Ø3.9 L13 |
| IC39150: | JDIcon® F Ø3.9 L15 |

Ø 4,3

| | |
|----------|----------------------|
| IC43060: | JDIcon® F Ø4.3 L6 |
| IC43080: | JDIcon® F Ø4.3 L8 |
| IC43100: | JDIcon® F Ø4.3 L10 |
| IC43115: | JDIcon® F Ø4.3 L11.5 |
| IC43130: | JDIcon® F Ø4.3 L13 |
| IC43150: | JDIcon® F Ø4.3 L15 |

Ø 5,0

| | |
|----------|----------------------|
| IC50060: | JDIcon® F Ø5.0 L6 |
| IC50080: | JDIcon® F Ø5.0 L8 |
| IC50100: | JDIcon® F Ø5.0 L10 |
| IC50115: | JDIcon® F Ø5.0 L11.5 |
| IC50130: | JDIcon® F Ø5.0 L13 |
| IC50150: | JDIcon® F Ø5.0 L15 |



Cover screw:

ICCS

Cover screw JDIcon®



Healing Abutment:

| | |
|--------|--------------------------------------|
| ICHA43 | Healing Abutment Ø 4.0 H 3.0 JDIcon® |
| ICHA45 | Healing Abutment Ø 4.0 H 5.0 JDIcon® |
| ICHA47 | Healing Abutment Ø 4.0 H 7.0 JDIcon® |
| ICHA53 | Healing Abutment Ø 5.0 H 3.0 JDIcon® |
| ICHA55 | Healing Abutment Ø 5.0 H 5.0 JDIcon® |
| ICHA57 | Healing Abutment Ø 5.0 H 7.0 JDIcon® |
| ICHA59 | Healing Abutment Ø 5.0 H 9.0 JDIcon® |
| ICHA63 | Healing Abutment Ø 6.0 H 3.0 JDIcon® |
| ICHA65 | Healing Abutment Ø 6.0 H 5.0 JDIcon® |
| ICHA67 | Healing Abutment Ø 6.0 H 7.0 JDIcon® |



Healing Abutment Bridge:

| | |
|---------|---|
| ICHA53B | Healing Abutment Bridge Ø 5.0 H 3.0 JDIcon® |
| ICHA55B | Healing Abutment Bridge Ø 5.0 H 5.0 JDIcon® |
| ICHA57B | Healing Abutment Bridge Ø 5.0 H 7.0 JDIcon® |



Impression Coping:

OPEN TRAY

| | |
|----------|---|
| ICICOT4C | Impression Coping open tray Ø 4.0 JDIcon® |
| ICICOT5C | Impression Coping open tray Ø 5.0 JDIcon® |
| ICICOT6C | Impression Coping open tray Ø 6.0 JDIcon® |

CLOSED TRAY

| | |
|----------|---|
| ICICCT4C | Impression Coping closed tray Ø 4.0 JDIcon® |
| ICICCT5C | Impression Coping closed tray Ø 5.0 JDIcon® |
| ICICCT6C | Impression Coping closed tray Ø 6.0 JDIcon® |



Impression Coping Bridge:

| | |
|-----------|--|
| ICICOTNEC | Impression Coping Bridge Open Tray JDIcon® |
|-----------|--|



Temporary Abutment:

| | |
|---------|---|
| ICTAEC | Temporary Abutment engaging JDIcon® |
| ICTANEC | Temporary Abutment non engaging JDIcon® |



Straight Abutment:

| | |
|-----------|---------------------------------------|
| ICSA4520C | Straight Abutment Ø 4.5 H 2.0 JDIcon® |
| ICSA4540C | Straight Abutment Ø 4.5 H 4.0 JDIcon® |
| ICSA5020C | Straight Abutment Ø 5.0 H 2.0 JDIcon® |
| ICSA5040C | Straight Abutment Ø 5.0 H 4.0 JDIcon® |
| ICSA6020C | Straight Abutment Ø 6.0 H 2.0 JDIcon® |
| ICSA6040C | Straight Abutment Ø 6.0 H 4.0 JDIcon® |



Torque recommended 30 Ncm

GP Abutment:

| | |
|---------|---------------------------|
| ICGP40C | GP Abutment Ø 4.0 JDIcon® |
| ICGP50C | GP Abutment Ø 5.0 JDIcon® |
| ICGP60C | GP Abutment Ø 6.0 JDIcon® |

Torque recommended 30 Ncm



Anatomic Abutment:

| | |
|----------|---|
| ICEA15C | Anatomic Abutment Ø 5.0 H 1.5 JDIcon® |
| ICEA30C | Anatomic Abutment Ø 5.0 H 3.0 JDIcon® |
| IC15A15C | Anatomic Abutment angulated 15° H 1.5 JDIcon® |
| IC15A30C | Anatomic Abutment angulated 15° H 3.0 JDIcon® |
| IC25A15C | Anatomic Abutment angulated 25° H 1.5 JDIcon® |
| IC25A30C | Anatomic Abutment angulated 25° H 3.0 JDIcon® |



Torque recommended 30 Ncm

Wax Up Abutment:

| | |
|---------|--------------------------------------|
| ICWAEC | Wax Up Abutment engaging JDIcon® |
| ICWANEC | Wax Up Abutment non engaging JDIcon® |

Torque recommended 30 Ncm



Gold Abutment:

| | |
|---------|------------------------------------|
| ICGAEC | Gold Abutment engaging JDIcon® |
| ICGANEC | Gold Abutment non engaging JDIcon® |

Torque recommended 30 Ncm



Prosthetic Screw:

| | |
|------|----------------------------------|
| ICS | Abutment Screw JDIcon® |
| ICSA | Abutment Screw angulated JDIcon® |

Torque recommended 30 Ncm



Abutment Retrieval Tool:

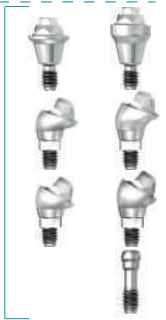
| | |
|-------|--------------------------|
| ICATR | Abutment Retrieval Tool® |
|-------|--------------------------|



Conical Abutment:

| | |
|-----------|--|
| ICCA15C | Straight Conical Abutment H 1.5 JDIcon® |
| ICCA30C | Straight Conical Abutment H 3.0 JDIcon® |
| ICCA1725C | Conical Abutment angulated 17° H 2.5 JDIcon® |
| ICCA1735C | Conical Abutment angulated 17° H 3.5 JDIcon® |
| ICCA3025C | Conical Abutment angulated 30° H 2.5 JDIcon® |
| ICCA3035C | Conical Abutment angulated 30° H 3.5 JDIcon® |
| ICCASA | Screw for angulated Conical Abutment JDIcon® |

Torque recommended 30 Ncm



Note: All the prosthetic components on conical abutments are the same as JDEvolution® implant line.

TiBase, JDScanBody and Implant Replica CAD CAM:

| | |
|------------|---|
| ICSBCEC | JD ScanBody for JDIcon® |
| ICTIBC | TiBase engaging JDIcon® |
| ICTIBNEC | TiBase non engaging JDIcon® |
| ICTIB15C | TiBase engaging H 1.5 JDIcon® |
| ICTIB15NEC | TiBase non engaging H 1.5 JDIcon® |
| ICTIB30C | TiBase engaging H 3.0 JDIcon® |
| ICTIB30NEC | TiBase non engaging H 3.0 JDIcon® |
| EVSCBOW | ScanBody for TiBase |
| ICANCN | DAS* Implant Replica CAD CAM for JDIcon® |
| ICPMNC | JD Pre-milled blanks and abutment screw JDIcon® |

*Direct Analog Screw



Torque recommended 30 Ncm

Interfaces

| | |
|----------|------------------------------------|
| ICINTEC | Interface engaging for JDIcon® |
| ICINTNEC | Interface non engaging for JDIcon® |



Ball Abutment:

| | |
|--------|-----------------------------|
| ICBA15 | Ball Abutment H 1.5 JDIcon® |
| ICBA30 | Ball Abutment H 3.0 JDIcon® |
| ICBA50 | Ball Abutment H 5.0 JDIcon® |

Torque recommended 30 Ncm



Note: All the prosthetic components on ball abutments are the same as JDEvolution® implant line.

Emi Abutment:

| | |
|---------|----------------------------|
| ICEMI15 | Emi Abutment H 1.5 JDIcon® |
| ICEMI30 | Emi Abutment H 3.0 JDIcon® |
| ICEMI50 | Emi Abutment H 5.0 JDIcon® |

Torque recommended 30 Ncm



Note: All the prosthetic components on emi abutments are the same as JDEvolution® implant line.

Implant replica:

| | |
|------|-------------------------|
| ICAN | Implant replica JDIcon® |
|------|-------------------------|



Implant and prosthetic drivers:

| | |
|-----------|---|
| ICID | Implant driver JDIcon® |
| ICIDL | Implant driver long JDIcon® |
| EVSDPF20 | Screwdriver hex 1.20 for torque wrench L20 |
| EVSDPF25 | Screwdriver hex 1.20 for torque wrench L25 |
| EVSDCAF | Screwdriver torque wrench Conical Abutment |
| EVSDP20 | Screwdriver hex 1.20 machine prosthetic L20 |
| EVSDP25 | Screwdriver hex 1.20 machine prosthetic L25 |
| EVSDP30 | Screwdriver hex 1.20 machine prosthetic L30 |
| EVSDCA | Screwdriver machine Conical Abutment |
| EVSDPF25A | Screwdriver screw angulated for torque wrench L25 |
| EVSDPF30A | Screwdriver screw angulated for torque wrench L30 |



Bone mill:

| | |
|--------|-------------------------|
| ICBM5C | Bone mill Ø 5.0 JDIcon® |
| ICBM6C | Bone mill Ø 6.0 JDIcon® |
| ICBMG | Bone mill guide JDIcon® |





JDENTALCARE

www.jdentalcare.com