

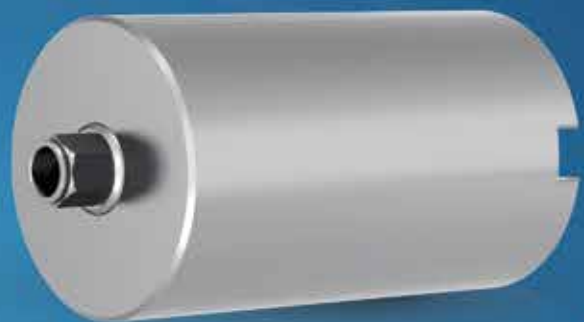


JDENTALCARE

just smile



JD Digital
Solutions.





JDENTALCARE
just smile

Index

JD Digital solutions for Intraoral Scanning	p. 02
JD Implant Libraries	p. 04
JD Guided Surgery Kit	p. 06
JD Surgical Guide and 3D Model manufacturing for guided surgery	p. 08
Guided Surgery Digital Planning Service	p. 09
JD lab: JDentalCare quality at your service	p. 10
New Technologies for Metal Full-arch rehabilitations	p. 14
Clinical Cases	p. 16
The JD screw angulated channel technology	p. 18
JD Pre-milled customized abutment solutions	p. 19

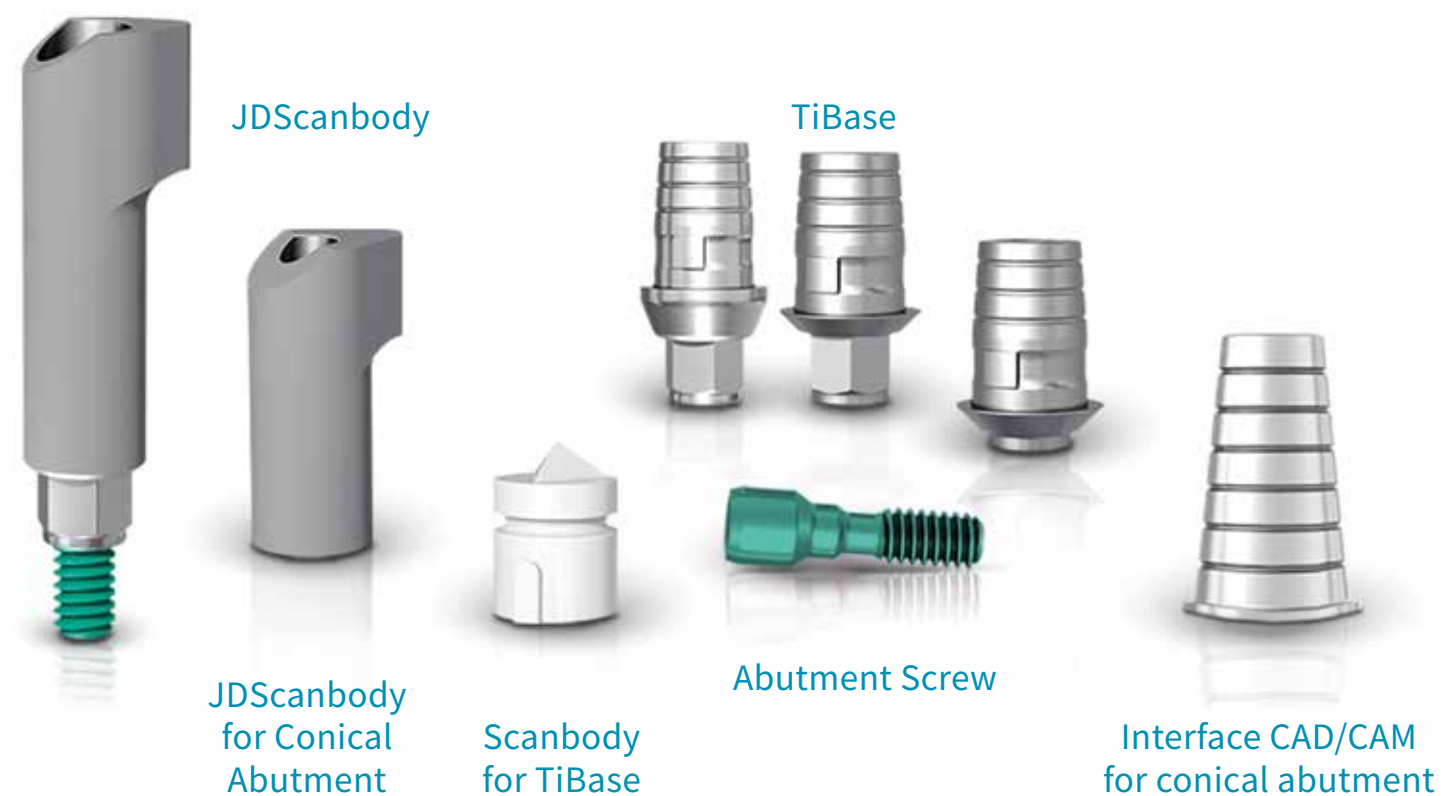


For technical assistance:
Tel. +39 059 392827

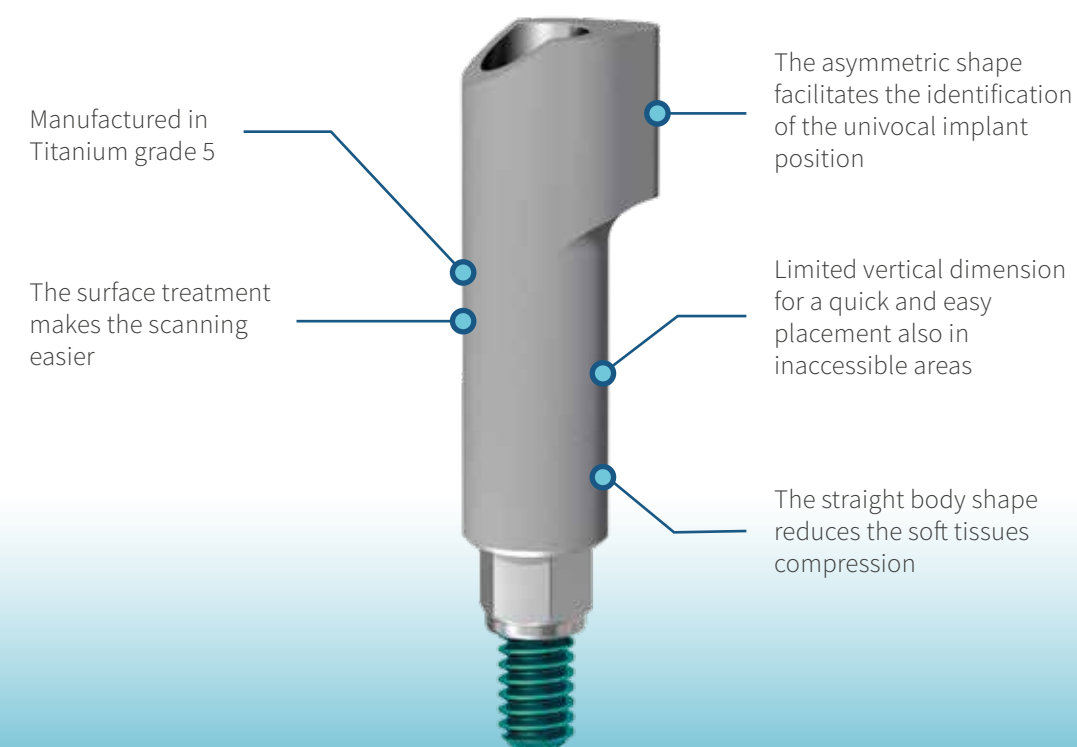
Working time:
8.30 am - 5.30 pm

JD Digital solutions for Intraoral Scanning.

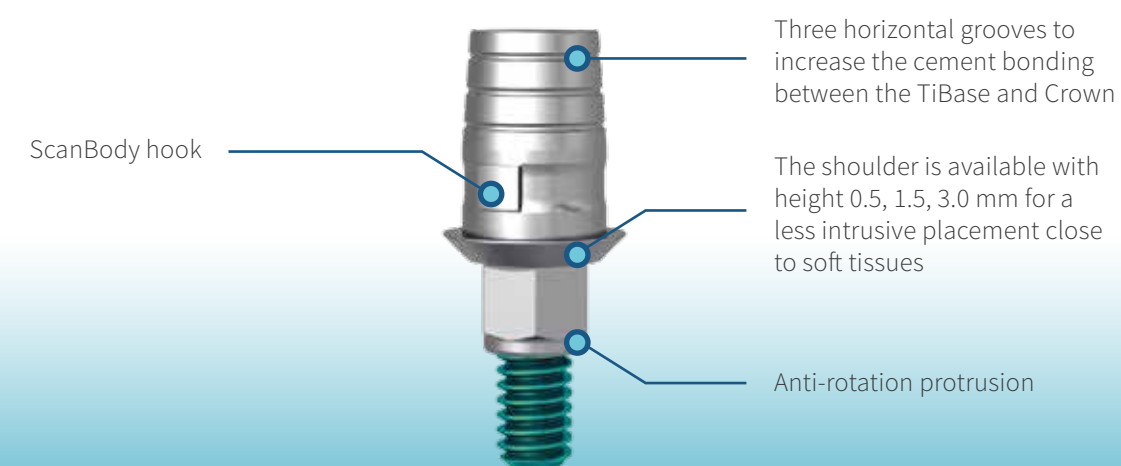
Extending the art of implantology to your CAD/CAM restoration jobs, making it as simple as JD Implant system. With all JD abutment solutions for intraoral scanning you will be able to perform an easy and accurate optical impression directly in the patient mouth.



All JD Scanbody and TiBase abutments are available for all JD Implant lines.



JD Scanbody features



TiBase features



JD Implant Libraries.

Available for all main CAD/CAM dental planning and modeling software.

JDentalCare provides open implant libraries for all JD Implant lines to guarantee maximum precision and flexibility to your laboratory technicians! They will be able to realize custom-made abutments for personalized results importing all JD implant maths in the software with both engaging and non engaging connection.



3shape

exocad

dental wings

JD Implant libraries are available on JD website.

All JD Implant libraries for Exocad, 3Shape and DentalWings are available on JD website! Ask to our offices or contact your local JD distributor for more info.

3shape

dental wings

exocad



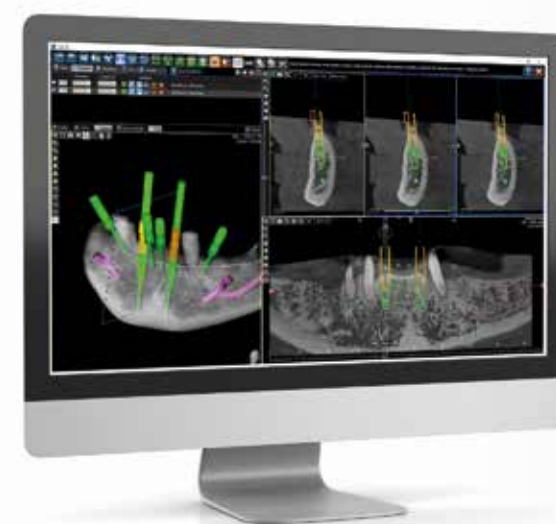
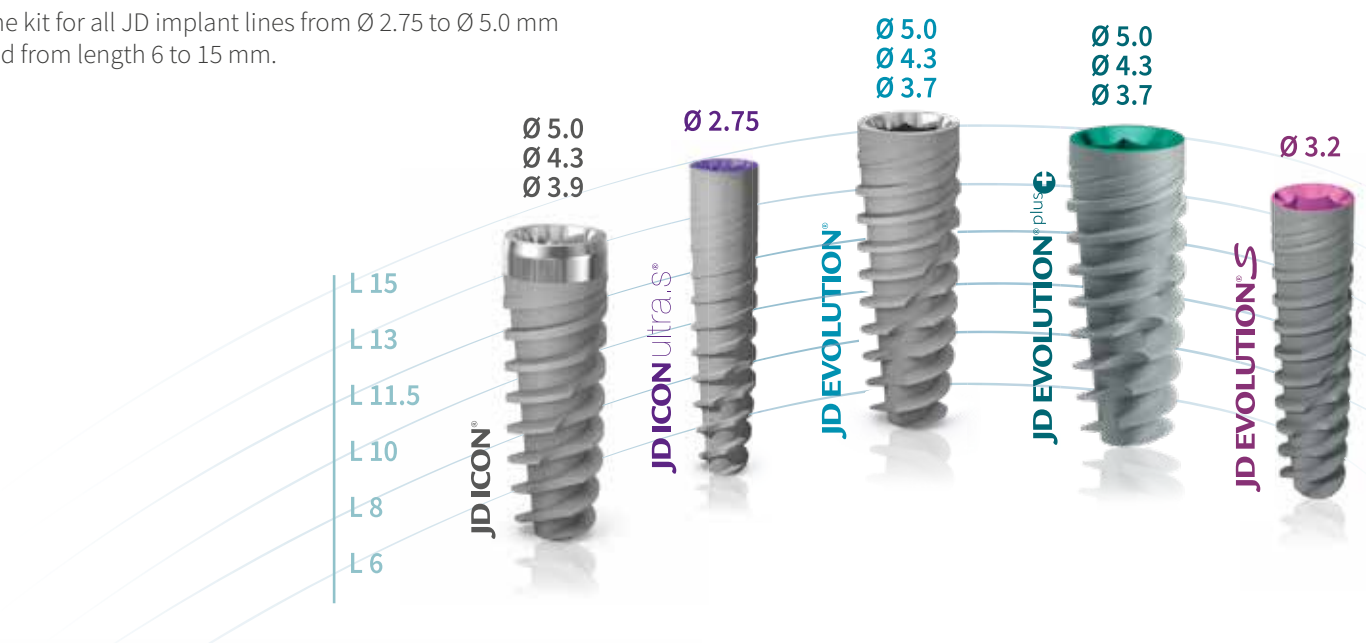
JD Guided Surgery Kit.

Let your hand be guided by the JD Guided Surgery kit! The complete solution to perform a minimally invasive surgery with more precision, increased predictability results with few simple guided surgery steps.

Simplicity.

One Kit for all JD implant lines.

One kit for all JD implant lines from Ø 2.75 to Ø 5.0 mm and from length 6 to 15 mm.



Compatibility.

User-friendly software design.

A single kit compatible with the main software programs for guided surgery present on the market: Implant Studio 3hape, Blue Sky Bio, DDS Pro and particularly 3Diemme Software.

Precision.

Guided implant depth control.

High precision in surgical procedures: implants are placed to the planned depth using a surgical guide and the guided surgery instruments are used in combination with a single sleeve of Ø 5.05 mm for a secure implant depth control.



JD Surgical Guide and 3D Model manufacturing for guided surgery.



Surgical Guide

The surgical guides manufactured by our JD lab are delivered with all sleeves already inserted. Thanks to these sleeves of Ø 5.05 mm suitable for all implant diameters you will perform a precise surgery according to the planning made by the software. You will work in safety and speed, maximizing the productivity of your dental office.



3D Model for guided surgery

If your laboratory or your clinic don't have a 3D printer, our JD lab can offer to you a Model printing service for prosthesis on implants and on abutments.



Guided Surgery Digital Planning Service.

Need help with the Guided Surgery Digital Planning? We can do it for you!

Our expert dentists can make all the Guided Surgery Digital Planning for you! Contact our offices or your local JD distributor for more info.



JDlab.

JDentalCare quality at your service.

JD lab offers you an integrated service for the design and manufacturing of aesthetic treatments on dental implants. JD lab solutions will allow you to get high quality aesthetic rehabilitations thanks to the use of advanced CAD / CAM technologies. We can guarantee you only precision and safety for your prosthesis.



JD lab technologies.

CAD-CAM Dental design and manufacturing.
High aesthetic libraries to design your rehabilitations.

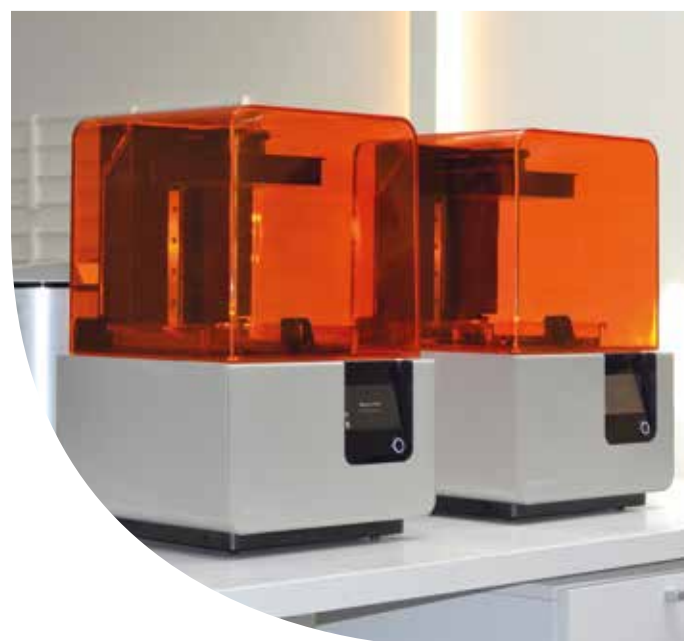
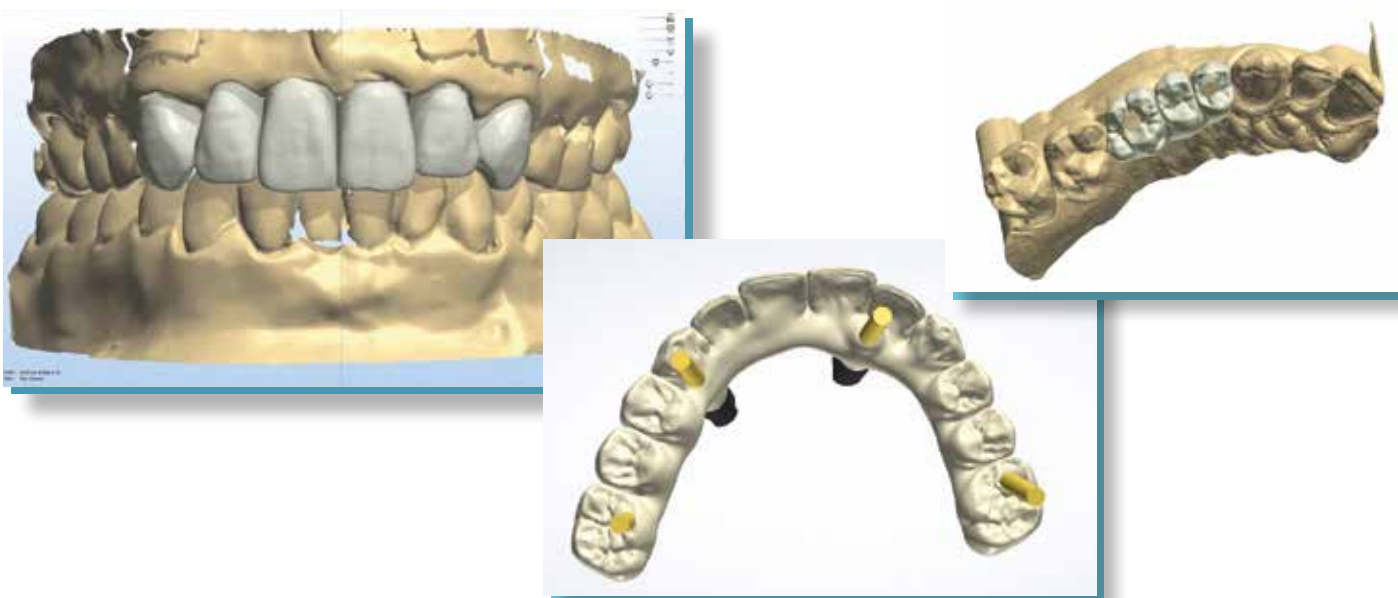


3D Printer solution.



Digital Model Lab Scanning.





JD Lab services.

- ✓ Zirconia crowns and bridges
 - ✓ Cerasmart inlays/onlays
 - ✓ Lithium-disilicate inlays/onlays
 - ✓ Lithium-disilicate crowns and bridges
 - ✓ Titanium composite crowns and bridges
 - ✓ PMMA crowns and bridges
 - ✓ Titanium composite full-arches
 - ✓ Zirconia full-arches
 - ✓ Titanium Zirconia full-arches
- Special services for guided surgery:**
- ✓ Surgical guide
 - ✓ Model 3D for guided surgery
 - ✓ Guided surgery digital planning service



For technical assistance:
Tel. +39 059 392827

Working time:
8.30 am - 5.30 pm

New Technologies for Metal Full-arch rehabilitations.



The rehabilitation of completely edentulous arches with fixed implant supported prosthesis is a challenging task. New technologies such as CAD CAM design and manufacturing play an important role in achieving predictable results. JD lab can manufacture also CAD CAM milled titanium Full- arch rehabilitations with aesthetic and functional outcomes.

JD Metal Full-arch rehabilitations.

Advantages and features.

Precision



Strength



Aesthetic

Clinical cases.



JD lab implant crown.



The Implant Crown design is extremely precise and customized thanks to the JD scanner and JD lab software.



Delivery of the screw retained Implant Crown for an easier placement and follow-up in the long term.



Notice the excellent aesthetic result of the screw retained zirconia crown on the molar in the left lower jaw. The access hole of the screw is invisible. Notice that on the molar in the right lower jaw there is presence of a screwed metal crown ceramic. It is clearly visible the dark area of the access canal due to the metal transparency present below.



Lateral view of the prosthetic restoration in the third quadrant. The soft tissues appear pink and without any gray area, which is usually visible around the metal ceramic restorations.



The final x-ray shows the accuracy of the crown connection with the implant.

JD lab implant bridge.



Design of an implant Crown bridge with scanner and software JD lab. Thanks to the accuracy and precision of the JD lab software, we can guarantee you extremely passive structures.



Delivery of the bridge screwed on three implants: with a screwed retained solution you will have a simplified management over time without the cementing phase.



Notice the excellent aesthetic result of the monolithic zirconia crowns screwed on implants. The prosthetic screw channels are invisible thanks to the absence of metal.

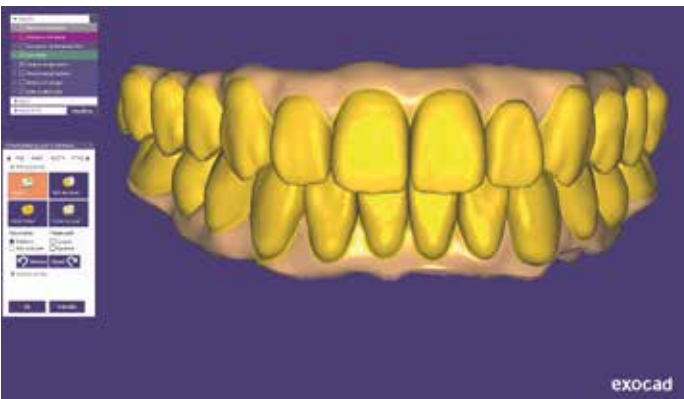


Lateral view of the prosthetic restoration in the first quadrant.



The final Xray shows the accuracy of the bridge, which is screwed with no tension.

JD lab metal zirconia full-arch.



Metal Zirconia Double Arch rehabilitation.
The metal zirconia full arches design is extremely precise and customized.



Delivery of the metal zirconia arches screwed on implants.
Delivery of the metal zirconia arches for a greater resistance and duration over time.



Final results occlusal view.
Notice the excellent aesthetic result of the two metal zirconia structures.

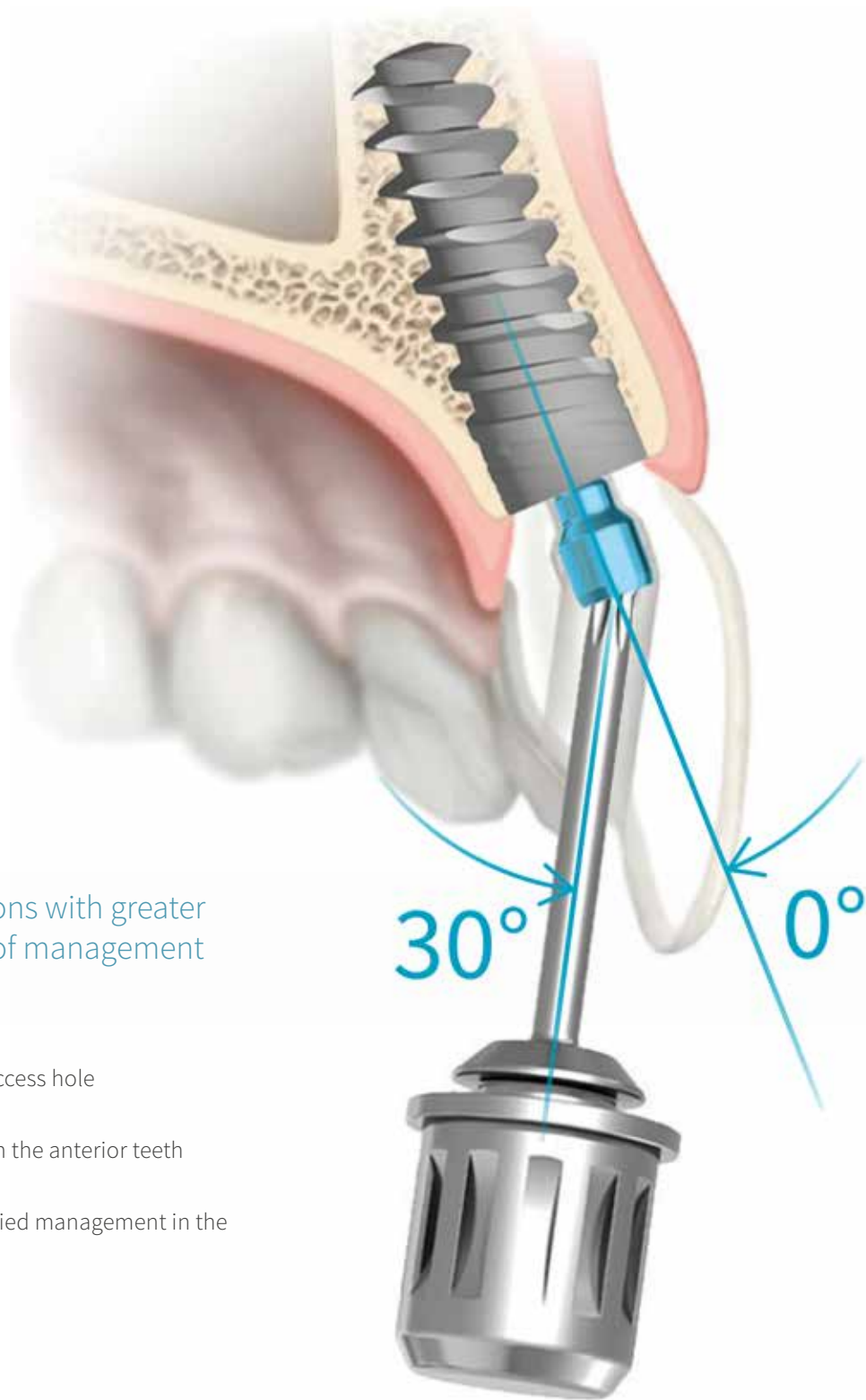


Final result front view.
Front view of the two arches restoration.



Final X-ray.
The final x-ray shows the accuracy of the structures which are screwed without tension.

JD screw angulated channel technology:



For screw retained rehabilitations with greater aesthetic, simplicity and ease of management over time:

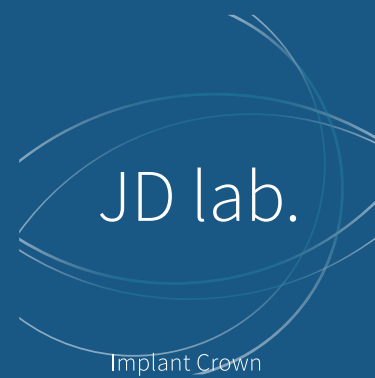
- Useful to correct the inclination of the access hole for the abutment screw.
- No more vestibular screw-access hole on the anterior teeth crowns.
- Screw-retained restorations for a simplified management in the long-term.
- More aesthetic and simplicity.

JD Pre-milled customized abutment solutions.



JD Pre-milled

Choose your JD Pre-Milled Blanks to design customized Abutments! They are compatible with Medentika abutment blank holders which are available for a steadily growing number of milling machines. Please contact our offices or your local JD Distributor for more info.



For technical assistance:
Tel. +39 059 392827

Working time:
8.30 am - 5.30 pm

